



PMV Positioner Selection



P5/EP5 positioner series

- For all quarter turn actuators.
- Fit's linear type Valtek, Fisher 667, Masoneilan.
- General purpose, IS & EEx d.
- Modular, add on F5 feedback option.
- Fail freeze option, high air delivery.



F5 feedback unit

- Add on feedback option for P5/EP5 series.
- General purpose, IS & EEx d.
- Modular, switches and 4-20 mA transmitter.



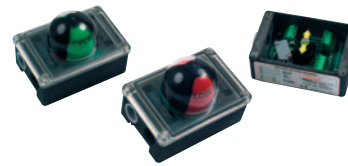
D20 compact digital positioner

- Digital, Auto calibration, LED's.
- For linear single acting actuators.
- General purpose & IS.
- HART option.
- Direct mounting to Flowact actuators.
- Plug in feedback option.



D3 advanced digital positioner

- Digital, Auto calibration, LCD display.
- Single & double acting, rotary or linear actuators.
- General purpose, IS & EEx d.
- Flexible mounting.
- Plug in switches & feedback modules.
- HART, Profibus PA & Foundation Fieldbus option.
- Fail freeze, remote mounted version.



W series switchboxes

- Simple Alu switchbox with plastic cover.
- Flat or Dome indicator, EEx ia versions.
- 2 x mechanical SPDT or P+F sensors.
- Quick set cams.
- Low profile mounting.
- Terminals for solenoid connection.



XCL switch box range

- Explosion proof switchbox.
- General purpose & EEx d.
- Flat or Dome indicator.
- Up to 4 x switches or P+F sensors terminals for solenoid connection.



ValveSight

- Advanced diagnostic software
- FDT / DTM open technology
- For D3 digital positioner
- User friendly

Experience In Motion



PMV Positioner Selection



✓ = Possible O = Consult PMV X = Bolt on block

	Linear 534-6 6-20 mm	Rotary VDI/VDE 3845	Single acting	Double acting	EEx Ia ATEX	EEx d ATEX	CSA/FM	Pneumatic 3-15 PSI	4-20 mA input	Profibus PA	Foundation Fieldbus	HART	Limit Switch option	4-20 mA transmitter	Fail freeze option	-40 C/F option	Flowact direct mount	Vatek linear mounting	Gauge ports integrated	Remote mount option	LCD Display	
EP3	✓		✓	X	✓	✓	✓		✓							✓	✓	✓	X			EP3
P5	O	✓	✓	✓				✓					✓	✓		✓		✓	✓			P5
EP5	O	✓	✓	✓	✓	✓	✓		✓				✓	✓	✓	✓		✓	✓			EP5
F5	✓	✓			✓	✓	✓						✓	✓		✓		✓				F5
D20	✓	✓	✓	X	✓				✓			✓	✓	✓		✓	✓	✓	X	✓		D20
D3X, D3I	✓	✓	✓	✓	✓				✓	✓	✓	✓	✓	✓	✓	-30C/ -22F		✓	X	✓	✓	D3X, D3I
D3E	✓	✓	✓	✓		✓	✓		✓	✓	✓	✓		✓	✓	-30C/ -22F	✓	✓	✓	✓	✓	D3E
W - Switch	✓	✓			✓								✓			✓		✓				W - Switch
XCL - Switch	✓	✓				✓	✓						✓	✓		✓		✓				XCL - Switch

R3/09

Experience In Motion

infopmw@flowserve.com
+46 (0)8 555 106 00
www.pmv.nu