

GOLD RING Series 28 Two-Way Pilot-Operated High Pressure Valves

SPECIFICATIONS

Mechanical Characteristics

Standard Materials of Construction

- Body-Brass
- Seals-NBR and Urethane
- Plunger and Pole Piece-430FR Stainless Steel
- Plunger Tube-305 Stainless Steel
- Springs-302 Stainless Steel
- Shading Coil-Copper (Brass Bodies)
- Piston-Delrin
- Piston Rings-PTFE

Compatible Fluids

- Generally installed where high pressure and large flow requirements dictate the use of piston valves

Electrical Characteristics

Voltages

- DC-6, 12, 24, 120, 125 (other voltages available upon request)
- AC-24/60, 110/120-50/60, 220/240-50/60, 440/480-50/60

Coil

- Class F Standard, Class H Available

Miscellaneous

Temperature Ratings (media as listed)

- AC Voltages: 200°F max.
- DC Voltages: 150°F max.
- Ambient: 32-77°F (standard)
- For temperature variations, consult the factory.

Installation

- Valves should be mounted vertical and upright. See mounting dimensions (nominal) shown here. For certified dimensions, consult factory.

Applications

- Used in a variety of applications including: Blow Molding, Compressors, Car Washer Equipment, and Pumps.

PILOTED PISTON HIGH PRESSURE BRASS VALVES– NORMALLY CLOSED (ENERGIZE TO OPEN), NBR SEALS

AC VALVE SPECIFICATIONS

| NPT Pipe Size | Orifice Diameter | | Flow Factor | | Operating Pressure Differential | | | | | | | | Max. Temp. | | AC Watt | Const. Ref. | Valve Part Number |
|---------------|------------------|-------|-------------|------|---------------------------------|--------------------------|------|-----------------|------|----------------------------|------|--------|------------|----|---------|-------------|-------------------|
| | inch | mm | Cv | Kv | Min. (PSI/Bar) | Max. (MOPD) | | | | | | °F | °C | | | | |
| | | | | | | Air, Inert Gas (PSI/Bar) | | Water (PSI/Bar) | | Light Oil 300SSU (PSI/Bar) | | | | | | | |
| 1/4 | 5/16 | 7.94 | 1.5 | 1.29 | 15 | 1.03 | 1500 | 103.45 | 1500 | 103.45 | 1500 | 103.45 | 200 | 93 | 11.0 | 69A | 04F28C1D20ACF |
| 3/8 | 5/16 | 7.94 | 1.5 | 1.29 | 15 | 1.03 | 1500 | 103.45 | 1500 | 103.45 | 1500 | 103.45 | 200 | 93 | 11.0 | 69B | 06F28C1D20ACF |
| 1/2 | 3/8 | 9.53 | 3.2 | 2.76 | 25 | 1.72 | 1500 | 103.45 | 1500 | 103.45 | 1500 | 103.45 | 200 | 93 | 11.0 | 69 | 08F28C1D24ACF |
| 3/4 | 3/4 | 19.05 | 7.8 | 6.72 | 25 | 1.72 | 1000 | 68.97 | 1000 | 68.97 | 1000 | 68.97 | 200 | 93 | 11.0 | 70 | 12F28C1D48BCF |

PILOTED PISTON HIGH PRESSURE BRASS VALVES– NORMALLY OPEN (ENERGIZE TO CLOSE), NBR SEALS

AC VALVE SPECIFICATIONS

| NPT Pipe Size | Orifice Diameter | | Flow Factor | | Operating Pressure Differential | | | | | | | | Max. Temp. | | AC Watt | Const. Ref. | Valve Part Number |
|---------------|------------------|-------|-------------|------|---------------------------------|--------------------------|------|-----------------|------|----------------------------|------|-------|------------|----|---------|-------------|-------------------|
| | inch | mm | Cv | Kv | Min. (PSI/Bar) | Max. (MOPD) | | | | | | °F | °C | | | | |
| | | | | | | Air, Inert Gas (PSI/Bar) | | Water (PSI/Bar) | | Light Oil 300SSU (PSI/Bar) | | | | | | | |
| 1/2 | 3/8 | 9.53 | 3.2 | 2.76 | 25 | 1.72 | 1000 | 68.97 | 1000 | 68.97 | 1000 | 68.97 | 200 | 93 | 11.0 | 71 | 08F28C1D28ACF |
| 3/4 | 3/4 | 19.05 | 7.8 | 6.72 | 25 | 1.72 | 500 | 34.48 | 500 | 34.48 | 500 | 34.48 | 200 | 93 | 11.0 | 72 | 12F28C1D48BCF |

PILOTED PISTON HIGH PRESSURE BRASS VALVES– NORMALLY CLOSED (ENERGIZE TO OPEN), NBR SEALS

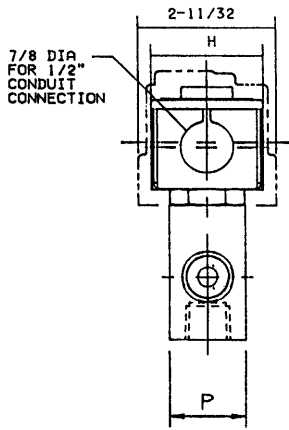
DC VALVE SPECIFICATIONS

| NPT Pipe Size | Orifice Diameter | | Flow Factor | | Operating Pressure Differential | | | | | | | | Max. Temp. | | AC Watt | Const. Ref. | Valve Part Number |
|---------------|------------------|-------|-------------|------|---------------------------------|--------------------------|-----|-----------------|-----|----------------------------|-----|-------|------------|----|---------|-------------|-------------------|
| | inch | mm | Cv | Kv | Min. (PSI/Bar) | Max. (MOPD) | | | | | | °F | °C | | | | |
| | | | | | | Air, Inert Gas (PSI/Bar) | | Water (PSI/Bar) | | Light Oil 300SSU (PSI/Bar) | | | | | | | |
| 1/2 | 3/8 | 9.53 | 3.2 | 2.76 | 25 | 1.72 | 500 | 34.48 | 500 | 34.48 | 500 | 34.48 | 150 | 66 | 11.5 | 69 | 08F28C1D24A3F |
| 3/4 | 3/4 | 19.05 | 7.8 | 6.72 | 25 | 1.72 | 450 | 31.03 | 450 | 31.03 | 450 | 31.03 | 150 | 66 | 11.5 | 70 | 12F28C1D48A3F |

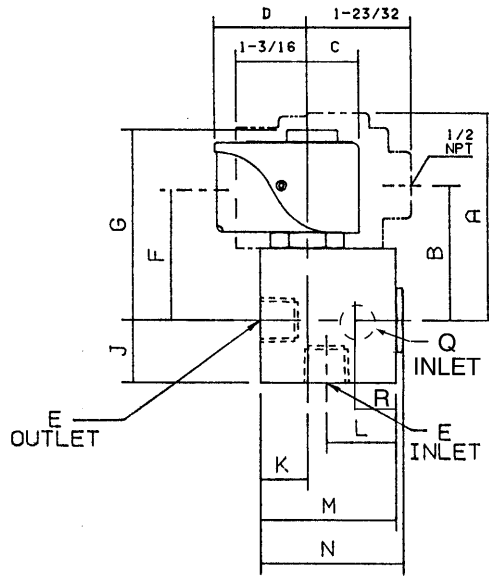
To choose a solenoid for your valve, refer to the AC or DC chart found on the flap attached to the back cover of this catalog.

Series 28 Two-Way Pilot-Operated

DRAWINGS



#69, 69A, 69B, 70, 71, 72



| | Drawing 69 | Drawing 69A | Drawing 69B | Drawing 70 | Drawing 71 | Drawing 72 |
|---|------------|-------------|-------------|------------|------------|------------|
| A | 3 29/64 | 3 1/32 | 3 1/32 | 3 27/32 | 3 29/64 | 3 27/32 |
| B | 2 1/4 | 1 57/64 | 1 57/64 | 2 41/64 | 2 1/4 | 2 41/64 |
| C | 7/8 | 7/8 | 7/8 | 7/8 | 7/8 | 7/8 |
| D | 1 17/32 | 1 17/32 | 1 17/32 | 1 17/32 | 1 17/32 | 1 17/32 |
| E | 1 1/2" NPT | --- | --- | 3/4" NPT | 1/2" NPT | 3/4" NPT |
| F | 2 11/64 | 1 13/16 | 1 13/16 | 2 9/16 | 2 1/32 | 2 13/32 |
| G | 3 3/16 | 2 3/4 | 2 3/4 | 3 37/64 | 3 3/16 | 3 37/64 |
| H | 1 13/16 | 1 13/16 | 1 13/16 | 1 13/16 | 1 13/16 | 1 13/16 |
| J | 1 3/64 | 11/16 | 11/16 | 1 13/32 | 1 3/64 | 1 13/32 |
| K | 25/32 | 13/16 | 13/16 | 29/32 | 25/32 | 29/32 |
| L | 63/64 | --- | --- | 2 11/32 | 63/64 | 2 11/32 |
| M | 2 1/4 | 2 1/4 | 2 1/4 | 3 35/64 | 2 1/4 | 3 35/64 |
| N | 2 3/8 | 2 13/32 | 2 13/32 | 3 47/64 | 2 3/8 | 3 47/64 |
| P | 1 1/4 | 1 1/2 | 1 1/2 | 2 | 1 1/4 | 2 |
| Q | --- | 1/4" NPT | 3/8" NPT | --- | --- | --- |
| R | --- | 15/16 | 15/16 | --- | --- | --- |

Explosion-Proof/Watertight
Shown in Outline

To choose a solenoid for your valve, refer to the AC or DC chart found on the flap attached to the back cover of this catalog.