

Anti-water hammer valves

2/2

Applications

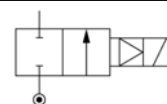
Magnalift valves are recommended in applications where the minimum pressure cannot be held at a sufficient level, i.e. where the effective supply pressure may be zero. This concerns applications like filling/emptying tanks by gravity and any other applications with a minimum pressure of zero.



Magnalift

Port size	Orifice (mm)	Flow factors (L/min)		Admissible differential pressure bar			Fluid temp. °C	Seat disc	Reference numbers				Power consumption (W)		Wt. (g)	Dim ref.
		kv	Qmax	Min	Max				Global valve reference	Valve reference no.	Housing	Coil	DC	AC		
G					DC	AC										

Normally closed



Brass body/Pipe mounting

3/8	15	65	65	0	10	-	75	NBR	7221GBG3VNH0	221G1330	2995	481865	¹	9	-	630	10	
	15	65	65	0	10	10	65	NBR			-	492070	¹	8	8	1000		
	15	65	65	0	10	10	75	NBR			-	492190	¹	9	11	1000		
	15	65	65	0	-	16	75	NBR	7221GBG3VN00	221G13	2995	481865	-	8	630	10		
	15	65	65	0	-	16	75	NBR			4270	481000	-	8	750			
1/2	15	65	65	0	7	-	75	NBR			4270	486265	14	-	760			
	15	65	65	0	10	-	75	NBR	7221GBG4VNH0	221G1530	2995	481865	¹	9	-	640	10	
	15	65	65	0	10	10	65	NBR			-	492070	¹	8	9	1010		
	15	65	65	0	10	10	75	NBR			-	492190	¹	9	11	1010		
	15	65	65	0	-	16	75	NBR	7221GBG4VN00	221G15	2995	481865	-	8	640	10		
3/4	15	65	65	0	-	16	75	NBR			4270	481000	-	8	760			
	15	65	65	0	7	-	75	NBR			4270	486265	14	-	770			
	15	80	80	0	-	10	75	NBR	7221GBG51NC0	221G1610	²	2995	481865	-	8	670	10	
	15	80	80	0	-	16	75	NBR			4270	481000	-	8	790			
	15	80	80	0	7	-	75	NBR			4270	486265	14	-	800			
1	15	80	80	0	10	-	75	NBR	7221GBG51NCH	221G1631	²	2995	481865	¹	9	-	670	10
	15	80	80	0	10	10	65	NBR			-	492070	¹	8	8	1040		
	15	80	80	0	10	10	75	NBR			-	492190	¹	9	11	1040		
	15	80	80	0	-	16	75	NBR	7221GBG61NC0	221G1710	²	2995	481865	-	8	810	10	
	15	80	80	0	-	16	75	NBR			4270	481000	-	8	930			
1	15	80	80	0	7	-	75	NBR			4270	486265	14	-	940			
	15	80	80	0	10	-	75	NBR	7221GBG61NCH	221G1731	²	2995	481865	¹	9	8	810	10
	15	80	80	0	10	10	65	NBR			-	492070	¹	8	8	1180		
	15	80	80	0	10	10	75	NBR			-	492190	¹	9	11	1180		
	25	160	160	0	-	16	75	NBR	7221GBG64NC0	221G2110	²	2995	481865	-	8	1170	10	
1	25	160	160	0	-	16	75	NBR			4270	481000	-	8	1290			
	25	160	160	0	6	-	75	NBR			4270	486265	14	-	1300			
	25	160	160	0	10	-	75	NBR	7221GBG64NCH	221G2131	²	2995	481865	¹	9	-	1170	10
	25	160	160	0	10	10	65	NBR			-	492070	¹	8	8	1540		
	25	160	160	0	10	10	75	NBR			-	492190	¹	9	11	1540		

Notes:

- Valves with model number ending by 30 or 31 are mainly equipped with electrical parts EEx me II T3/T4 No. 492190 or EEx m II T4/T5 No. 492070 or with standard DC coils.
- 4 position selector for controlled closure rate

Anti-water hammer valves 2/2 - Magnalift

	A	B	C	D	E	F	G	H
	mm	mm	mm	mm	mm	mm	inch	mm
G15/25	75	93	37.5	15	34	27	1/2	53
G13/23	75	93	37.5	15	34	27	3/8	53
G16/26	80	95.5	40	17.5	34	32	3/4	53
G17/27	85	102.5	42.5	22.5	36	41	1	53
G21	100	108	50	23	41	41	1	70

Dimension reference 10