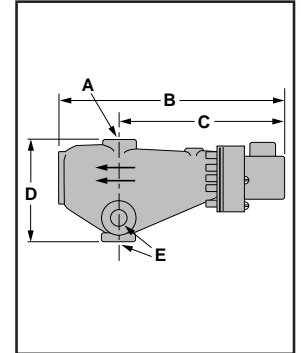


## Float Actuated Switch – For Fuel Oil

### Series 80 Liquid Level Controls



- For industrial or commercial applications where measuring or regulating Grade 2 fuel oil levels (with a specific gravity of 0.85 or greater) in storage tanks is required
- External mounting (with equalizing piping)
- ½" NPT tappings provided at top, bottom, and sides of body
- Single pole, double throw switch
- Maximum operating pressure 5 psi (.35 kg/cm<sup>2</sup>)
- Maximum water temperature 190°F (87°C)



### Electrical Ratings

Voltage	Motor Switch Rating (Amperes)		Pilot Duty
	Full Load	Locked Rotor	
120 VAC	7.4	44.4	125 VA at 120 or 240 VAC
240 VAC	3.7	22.2	

### Dimensions, in. (mm)

A NPT	B	C	D	E NPT
½	9¼ (235)	6¾ (171.4)	4¼ (108)	½

### Ordering Information

Model Number	Part Number	Description	Weight lbs. (kg)
80	158100	Low water cut-off	4.5 (2)