

# Pump Programme





**Service Plant Bochum –  
What We Offer**

**Page 2**

**Your Contacts at the  
Service Plant Bochum**

**Page 4**

**Overview of Products  
Service Plant Bochum**

**Page 6**

**Pump Programme  
Service Plant Bochum**

**Page 8**



## Service in Bochum – for Proven Pumps Made by KSB

You might require a specific pump or components for your system and find that the corresponding type series is no longer produced.

At the Service Plant Bochum we are specialised in supplying such spare parts and replacement pumps for specific type series – because KSB products have a long service life. We make sure that, for many years, the most diverse of components for your system will be available.

Bochum's pump programme comprises pumps for applications in the Industry, in Process Engineering, in Water and Waste Water, in the Energy sector and in Building Services.

Thanks to our comprehensive stock of frequently ordered spare parts, you will not have to wait long: In many cases, your delivery can be dispatched worldwide within 24 hours!

If a part is not stocked, we can produce it ourselves at short notice in our flexible manufacturing facilities.

We perform the required test runs in our own test bed. It is designed to thoroughly test dry installed pumps up to DN 250 – regardless of the pump make.

Benefit from our experience as a manufacturer: Do not hesitate to seek our advice on upgrading your pump sets to state-of-the art technology or adjusting the pump output to the actual requirements.

**Central service number: +49 234 52902-0**



Are you looking for a pump which is not listed in the product overview (page 6 ff), which means it is not manufactured or processed in Bochum?

We also have Service Plants in Halle and Bremen, which offer a comprehensive service for a large number of proven pumps from KSB's 140 plus years of manufacturing history.

Contact us in Bochum – We will be pleased to direct you!

## Your Contacts at the Service Plant Bochum

### Chemical Pumps



**Wolfgang Hutzel** ■

Tel. +49 234 52902-5111  
Fax +49 234 52902-5188  
E-mail: wolfgang.hutzel@ksb.com



**Erhard Krumnack** ■

Tel. +49 234 52902-5150  
Fax +49 234 52902-5188  
E-mail: erhard.krumnack@ksb.com

### Water and Ring-section Pumps



**Hubertus Hüffer** ■

Tel. +49 234 52902-5123  
Fax +49 234 52902-5188  
E-mail: hubertus.hueffer@ksb.com



**Jürgen Fritzsich** ■

Tel. +49 234 52902-5143  
Fax +49 234 52902-5188  
E-mail: juergen.fritzsich@ksb.com

### Waste Water Pumps



**Ulf Schilf** ■

Tel. +49 234 52902-5124  
Fax +49 234 52902-5188  
E-mail: ulf.schilf@ksb.com



**Günther Krieger** ■

Tel. +49 234 52902-5125  
Fax +49 234 52902-5188  
E-mail: guenther.krieger@ksb.com

### Export (Quotations/Orders Non-European Countries)



**Elmar Friedrich Strüder**

Tel. +49 234 52902-5113  
Fax +49 234 52902-5188  
E-mail: elmar.strueder@ksb.com

Africa, North America, Asia (Azerbaijan, Bhutan, China, Hong Kong, India, Indonesia, Iraq, Iran, Israel, Japan, Korea, Lebanon, Malaysia, Syria, Thailand, Turkmenistan, Uzbekistan, Turkey)



**Diana Kirsch**

Tel. +49 234 52902-5180  
Fax +49 234 52902-5188  
E-mail: diana.kirsch@ksb.com

Australia / Oceania, Central and South America, Asia (Abu Dhabi, Armenia, Bahrain, Burma, Dubai, Jordan, Cambodia, Qatar, Kazakhstan, Kuwait, Laos, Myanmar, Oman, Pakistan, Saudi Arabia, Singapore, Sri Lanka, Taiwan, United Arab Emirates, Vietnam)

### Spare Parts



Sales houses in Leverkusen, Stuttgart, Switzerland, United Kingdom, Norway, Spain, Portugal, Eastern Europe, Greece

**Gebhard Wieseemann**

Tel. +49 234 52902-5128  
Fax +49 234 52902-5188  
E-mail: gebhard.wieseemann@ksb.com



Sales houses in Leverkusen, Mainz, Nuremberg, Netherlands

**Jürgen Walter**

Tel. +49 234 52902-5154  
Fax +49 234 52902-5188  
E-mail: juergen.walter@ksb.com



Sales houses in Hanover, Halle, Austria, Italy, Belgium, Denmark, Finland

**Christian Andreas Kindler**

Tel. +49 234 52902-5120  
Fax +49 234 52902-5188  
E-mail: christian.andreas.kindler@ksb.com



Sales houses in Hamburg, Mainz, Munich, Berlin, Sweden, France

**Erik Krambeer**

Tel. +49 234 52902-5159  
Fax +49 234 52902-5188  
E-mail: erik.krambeer@ksb.com

### Head of Sales / Quotations and Order Processing / After-sales Service



**Dirk Schuwerack**

Tel. +49 234 52902-5117  
Mobil +49 172 2534905  
Fax +49 234 52902-5188  
E-mail: dirk.schuwerack@ksb.com

## Overview of Products at the Service Plant Bochum

| Type series                         | Contact | Spare parts | Pumps (complete) | Pumps supplied outside of the EU | Pumps supplied to EU destinations* | Details on page |
|-------------------------------------|---------|-------------|------------------|----------------------------------|------------------------------------|-----------------|
| CHC-group                           |         | X           | -                | -                                | -                                  | -               |
| CPK-W                               |         | X           | -                | -                                | -                                  | -               |
| CWK                                 |         | X           | -                | -                                | -                                  | -               |
| CPK-D                               | ■       | X           | X                | X                                | X                                  | 8               |
| CPK-U                               | ■       | X           | X                | X                                | X                                  | 8               |
| CPI                                 |         | X           | -                | -                                | -                                  | -               |
| CTN                                 | ■       | X           | X                | X                                | X                                  | 8               |
| ETA (standardised hydraulic system) | ■       | X           | X                | X                                | On request                         | 8               |
| ETA – pump brackets L 52, A and B   | ■       | X           | X                | X                                | On request                         | 9               |
| ETA – pump brackets C and D         | ■       | X           | X                | On request                       | On request                         | 9               |
| Etabloc (old)                       |         | X           | -                | -                                | -                                  | -               |
| ETANORM – 50 Hz                     | ■       | X           | X                | X                                | On request                         | 9               |
| Etanorm-Y, YU, YH                   |         | X           | -                | -                                | -                                  | -               |
| ETANORM-GTA, CTA, TG, TC            |         | X           | -                | -                                | -                                  | -               |
| ETA VL (old), ETA VL-OIL (old)      |         | X           | -                | -                                | -                                  | -               |
| ETALINE (old)                       |         | X           | -                | -                                | -                                  | -               |
| ETATHERM-M                          |         | X           | -                | -                                | -                                  | -               |
| GUK                                 |         | X           | -                | -                                | -                                  | -               |
| Heku (old Siemens pumps, SSW)       | ■       | X           | -                | -                                | -                                  | -               |
| IRIS                                |         | X           | On request       | -                                | -                                  | -               |
| KRP E/F                             | ■       | X           | X                | X                                | X                                  | 9/10            |
| KRPK                                | ■       | X           | X                | X                                | X                                  | -               |
| KRS-Bloc F/K                        | ■       | X           | X                | X                                | X                                  | 10              |
| KRS E/F/K                           | ■       | X           | X                | X                                | X                                  | -               |
| KRT (with explosion protection)     | ■       | X           | -                | -                                | -                                  | -               |
| KRT B                               | ■       | X           | X                | X                                | On request                         | 10              |
| KRTU                                | ■       | X           | X                | X                                | On request                         | 11              |
| KUK                                 | ■       | X           | -                | -                                | -                                  | -               |

\* In accordance with the new Machinery Directive 2006/42/EC (CE marking)

| Type series               | Contact | Spare parts | Pumps (complete) | Pumps supplied outside of the EU | Pumps supplied to EU destinations* | Details on page |
|---------------------------|---------|-------------|------------------|----------------------------------|------------------------------------|-----------------|
| KVP                       | ■       | X           | X                | X                                | X                                  | 11              |
| KVR                       | ■       | X           | X                | X                                | On request                         | 11              |
| KWK                       | ■       | X           | X                | -                                | -                                  | 11              |
| KWV                       | ■       | X           | On request       | -                                | -                                  | 12              |
| ME, MEF, MEN              |         | X           | -                | -                                | -                                  | -               |
| Movichrom G, C            |         | X           | -                | -                                | -                                  | -               |
| Multimagno                |         | X           | -                | -                                | -                                  | -               |
| Multiseco-EX – 50 Hz      |         | X           | -                | -                                | -                                  | -               |
| NEH, NEGH, NEZH           |         | X           | -                | -                                | -                                  | -               |
| NG, NF, NG-C              |         | X           | -                | -                                | -                                  | -               |
| RPKd                      | ■       | X           | On request       | On request                       | On request                         | 12              |
| RPKv                      | ■       | X           | On request       | On request                       | On request                         | 12/13           |
| SPK                       | ■       | X           | On request       | On request                       | On request                         | 13              |
| SPV                       | ■       | X           | On request       | On request                       | On request                         | 13              |
| WK/WL                     | ■       | X           | X                | X                                | On request                         | 14              |
| WKA                       | ■       | X           | X                | X                                | On request                         | 14              |
| WKF                       | ■       | X           | X                | X                                | X                                  | 14              |
| WKH, WLH                  | ■       | X           | X                | Subject to pp**                  | Subject to pp**                    | 14              |
| WKL / WKLn / WKLv / WKLvn | ■       | X           | X                | On request                       | On request                         | 15              |

\* In accordance with the new Machinery Directive 2006/42/EC (CE marking)

\*\* Subject to production permit

For any of these type series, please contact our service staff in the corresponding specialised subdivisions:

■ Chemical pumps

■ Waste water pumps

■ Water and ring-section pumps

## CPK-D

## Standardised chemical pump with hydrodynamic shaft seal



|                           |                     |
|---------------------------|---------------------|
| DN                        | 25-200 / 250-315    |
| up to Q m <sup>3</sup> /h | 1,100               |
| up to H m                 | 128                 |
| up to p <sub>d</sub> bar  | 13                  |
| up to T °C                | +150 <sup>1)</sup>  |
| up to n rpm               | 2,900 <sup>2)</sup> |

<sup>1)</sup> Reduced values for 120 °C and above  
<sup>2)</sup> For 60 Hz: 3,500 rpm

**Design:** Horizontal, radially split, single-stage, single-flow volute casing pump in back pull-out design, with radial impeller.

**Applications:** For handling aggressive fluids in the chemical, petrochemical and food processing industries, in refineries and paint shops, in heavy oil and coal upgrading plants. Particularly suitable if double mechanical seals cannot be used due to a lack of suitable sealing liquid, also if no flushing liquid is available to feed the gland packing or if the flushing liquid must not mix with the fluid handled.  
**Drive:** Direct-drive electric motor.

## CPK-U

## Standardised chemical pump with hydrodynamic shaft seal



|                           |                     |
|---------------------------|---------------------|
| DN                        | 25-200 / 250-315    |
| up to Q m <sup>3</sup> /h | 1,100               |
| up to H m                 | 128                 |
| up to p <sub>d</sub> bar  | 13                  |
| up to T °C                | +150 <sup>1)</sup>  |
| up to n rpm               | 2,900 <sup>2)</sup> |

<sup>1)</sup> Reduced values for 120 °C and above  
<sup>2)</sup> For 60 Hz: 3,500 rpm

**Design:** Horizontal, radially split, single-stage, single-flow volute casing pump in back pull-out design, with radial impeller.

**Applications:** For handling aggressive fluids in the chemical, petrochemical and food processing industries, in refineries and paint shops, in heavy oil and coal upgrading plants. Particularly suitable if double mechanical seals cannot be used due to a lack of suitable sealing liquid, also if no flushing liquid is available to feed the gland packing or if the flushing liquid must not mix with the fluid handled.  
**Drive:** Direct-drive electric motor.

## CTN

## Chemical vertical sump pump



|                           |             |
|---------------------------|-------------|
| DN                        | 25-250      |
| up to Q m <sup>3</sup> /h | 800         |
| up to H m                 | 93          |
| up to p <sub>d</sub> bar  | 16          |
| T °C                      | -40 to +300 |
| up to n rpm               | 2,900       |

**Design:** Vertical sump pump with one or two stages, pump in defined lengths for the required installation depths, wet or dry installation.

**Applications:** For handling aggressive fluids, also slightly contaminated or with a low solids content, in the chemical and petrochemical industries.

**Drive:** Directly coupled IEC motor above the sole plate.

## ETA (standardised hydraulic system)

## Low-pressure centrifugal pump series



|                           |                       |
|---------------------------|-----------------------|
| DN                        | 32-300                |
| up to Q m <sup>3</sup> /h | 1,500                 |
| up to H m                 | 100                   |
| up to p <sub>d</sub> bar  | 10 kp/cm <sup>2</sup> |
| up to T °C                | +160                  |
| up to n rpm               | 2,900                 |

**Design:** Horizontal low-pressure centrifugal pump, standard design, with pump bracket, one or two stages, special vertical variant ETA-VL.  
**Applications:** For water supply duties in municipalities, industry and agriculture; for irrigation and drainage; for handling sea water, brine and alkaline solutions; for circulating hot water, cooling water and oil; for drawdown at construction sites; as mixing and loading pumps in tank farms, as condensate pumps, marine pumps, etc.  
**Drive:** Direct-drive electric motor or combustion engine via flexible coupling; flat belt or V-belt drive possible.

## ETA – Pump brackets L 52, A and B

## Low-pressure centrifugal pump series



|                           |            |
|---------------------------|------------|
| DN                        | 32-150     |
| up to Q m <sup>3</sup> /h | 450        |
| up to H m                 | 90         |
| up to p <sub>d</sub> bar  | 10 (gauge) |
| up to T °C                | +160       |
| up to n rpm               | 2,900      |

**Design:** Horizontal low-pressure centrifugal pump, with pump bracket, one or two stages.

**Applications:** For water supply duties in municipalities, industry and agriculture; for irrigation and drainage; for handling sea water, brine and alkaline solutions; for circulating hot water, cooling water and oil; for drawdown at construction sites; as mixing and loading pumps in tank farms, as condensate pumps, marine pumps, etc.

**Drive:** Direct-drive electric motor or combustion engine via flexible coupling; flat belt or V-belt drive possible.

## ETA – Pump brackets C and D

## Low-pressure centrifugal pump series



|                          |                       |
|--------------------------|-----------------------|
| DN                       | 100-300               |
| Q m <sup>3</sup> /h      | 100-1,800             |
| up to H m                | 95                    |
| up to p <sub>d</sub> bar | 10 kp/cm <sup>2</sup> |
| up to T °C               | +140                  |
| up to n rpm              | 1,450                 |

**Design:** Horizontal low-pressure centrifugal pump, pump brackets C and D, supplements the ETA performance range up to 1,800 rpm, one or two stages for sizes DN 100-50/2 and 125-50/2.

**Applications:** For general water supply duties in municipalities, industry and agriculture; in waterworks, pressure boosting and irrigation systems; for circulating hot water, cooling water and oil; for drawdown at construction sites; as condensate pumps, loading pumps, etc.

**Drive:** Direct-drive electric motor, combustion engine or turbine via flexible coupling; flat belt or V-belt drive possible.

## ETANORM – 50 Hz

## Low-pressure centrifugal pump series



|                           |        |
|---------------------------|--------|
| DN                        | 32-300 |
| up to Q m <sup>3</sup> /h | 1,800  |
| up to H m                 | 95     |
| up to p <sub>d</sub> bar  | 16     |
| up to T °C                | +160   |
| up to n rpm               | 3,000  |

**Design:** Horizontal low-pressure centrifugal pump in back-pull out design, single-stage, dimensions and ratings to DIN 24255, with bearing bracket and support foot.

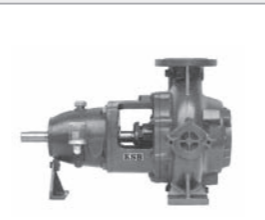
**Applications:** For general water supply duties in municipalities, industry and agriculture; for irrigation and drainage; for handling sea water, brine, alkaline solutions and condensate; for circulating hot water, cooling water and oil; as mixing and loading pumps, etc.

**Drive:** Direct-drive electric motor, combustion engine or turbine via flexible coupling; flat belt or V-belt drive possible.

Also available for 60 Hz

## KRPE

## Waste water centrifugal pump



|                           |        |
|---------------------------|--------|
| DN                        | 80-350 |
| up to Q m <sup>3</sup> /h | 2,630  |
| up to H m                 | 50     |
| up to p <sub>d</sub> bar  | 10     |
| up to T °C                | +70    |
| up to n rpm               | 1,450  |

**Design:** Horizontal, single-stage, radially split volute casing pump in back-pull out design with single vane impeller.

**Applications:** For handling untreated sewage and all types of waste water in sewage treatment plants and industrial applications.

**Drive:** Direct-drive electric motor via flexible coupling and V-belt drive possible.

## KRPF

## Centrifugal waste water pump



|                           |        |
|---------------------------|--------|
| DN                        | 80-350 |
| up to Q m <sup>3</sup> /h | 600    |
| up to H m                 | 90     |
| up to p <sub>d</sub> bar  | 10     |
| up to T °C                | +70    |
| up to n rpm               | 2,900  |

**Design:** Horizontal, single-stage, radially split volute casing pump with free-flow impeller, in back-pull out design.  
**Applications:** For handling untreated sewage and all types of waste water in sewage treatment plants and industrial applications.  
**Drive:** Direct-drive electric motor via flexible coupling and V-belt drive possible.

## KRS-Bloc K

## Centrifugal waste water pump



|                           |        |
|---------------------------|--------|
| DN                        | 50-150 |
| up to Q m <sup>3</sup> /h | 405    |
| up to H m                 | 39     |
| up to p <sub>d</sub> bar  | 6      |
| up to T °C                | +75    |
| up to n rpm               | 1,450  |

**Design:** Horizontal, radially-split volute casing pump in close-coupled design, single-stage, not submersible, not self-priming, with stub shaft.  
**Applications:** For handling contaminated, solids-containing fluids, pre-treated sewage, industrial and municipal waste water as well as all types of slurries without stringy material; for applications in waste water and process engineering, in the general industry and plant engineering; chemically neutral water for which GG-25 is suitable.  
**Drive:** Standardised motor.

## KRS-Bloc F

## Centrifugal waste water pump

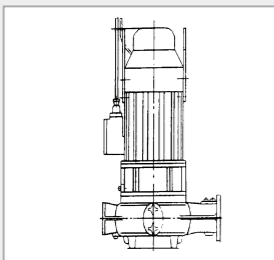


|                           |        |
|---------------------------|--------|
| DN                        | 50-150 |
| up to Q m <sup>3</sup> /h | 260    |
| up to H m                 | 24     |
| up to p <sub>d</sub> bar  | 6      |
| up to T °C                | +75    |
| up to n rpm               | 1,800  |

**Design:** Horizontal, radially-split volute casing pump in close-coupled design, single-stage, not submersible, not self-priming, with stub shaft.  
**Applications:** For handling all types of untreated and pre-treated waste water, sewage sludge, deep-well sludge, industrial and municipal waste water; for applications in the industry, in waste water management and effluent treatment plants; for waste water from spray booths containing coating and paint residues; for waste water from bottle rinsing systems containing paper and glue; for disposal duties in the meat and food processing industry.  
**Drive:** Standardised motor.

## KRT B

## Submersible waste water motor pump



|                           |         |
|---------------------------|---------|
| DN                        | 100-200 |
| up to Q m <sup>3</sup> /h | 1,000   |
| up to H m                 | 25      |
| up to p <sub>d</sub> bar  | 2,5     |
| up to T °C                | +30     |
| up to n rpm               | 1,450   |

**Design:** Horizontal or vertical dry-installed submersible motor pump, pump set fully floodable at any time (with the pump set continuing in normal operating mode), single-stage, single-entry, close-coupled, not self-priming. KRT B pumps are available with free flow impellers (F), single vane impellers (E) and channel impellers (K), without explosion protection.  
**Applications:** For handling all types of waste water, especially untreated waste water with long fibres and solid substances; for sewage sludge, fluids containing air and gas, recirculated sludge, deep-well sludge; for applications in waste water management, in the industry and in chemical engineering as well as in effluent treatment plants.  
**Drive:** Submersible electric motor with aluminium cooler or fan cooling.

## KRTU

## Submersible waste water motor pump



|                           |                      |
|---------------------------|----------------------|
| DN                        | 40-350 <sup>1)</sup> |
| up to Q m <sup>3</sup> /h | 3,200                |
| up to H m                 | 95                   |
| up to p <sub>d</sub> bar  | 10                   |
| up to T °C                | +30                  |
| up to n rpm               | 2,900                |

<sup>1)</sup> Up to DN 700 on request

**Design:** Vertical, wet-installed pump in stationary transportable design, without explosion protection. Design to ATEX < 30 kW up to year of construction 1992.  
**Applications:** For handling all types of waste water, especially untreated waste water with long fibres and solid substances; for sewage sludge, fluids containing air and gas, recirculated sludge, deep-well sludge; for applications in waste water management, in flue gas desulphurisation plants, in industrial and chemical applications as well as in effluent treatment plants.  
**Drive:** Submersible electric motor.

## KVP

## Vertical centrifugal pump with channel impeller



|                           |             |
|---------------------------|-------------|
| DN                        | 40-600      |
| up to Q m <sup>3</sup> /h | 6,200       |
| up to H m                 | 94          |
| up to p <sub>d</sub> bar  | 10          |
| T °C                      | -30 to +150 |
| up to n rpm               | 2,900       |

**Design:** Vertical, radially split centrifugal volute casing pump for wet, dry, underfloor or Cardan shaft installation; impeller matched to the operating conditions; single-stage, single-entry, modular design principle (same components as horizontal KWP pump).  
**Applications:** For handling waste water; for applications in waste water and process engineering.  
**Drive:** Standardised motor.

## KVR

## Vertical waste water pump



|                           |         |
|---------------------------|---------|
| DN                        | 150-600 |
| up to Q m <sup>3</sup> /h | 5,000   |
| up to H m                 | 90      |
| up to p <sub>d</sub> bar  | 10      |
| up to T °C                | +75     |
| up to n rpm               | 1,450   |

**Design:** Vertical, radially split centrifugal volute casing pump for underfloor or Cardan shaft installation; impeller matched to the operating conditions, single-stage, single-entry.  
**Applications:** For handling waste water; depending on the impeller type also untreated waste water (free flow and single vane impeller) or pre-screened waste water (channel impeller); for applications in waste water and water management as well as in the chemical, food processing and canning industry.  
**Drive:** Standardised motor.

## KWK

## Horizontal centrifugal pump with channel impeller



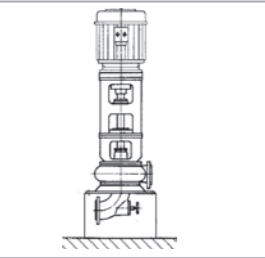
|                           |                       |
|---------------------------|-----------------------|
| DN                        | 250-350 <sup>1)</sup> |
| up to Q m <sup>3</sup> /h | 1,600                 |
| up to H m                 | 75                    |
| up to p <sub>d</sub> bar  | 10                    |
| up to T °C                | +140                  |
| up to n rpm               | 1,450                 |

<sup>1)</sup> DN 50-200 covered by our KWP centrifugal pump in back-pull out design with channel impeller.

**Design:** Horizontal centrifugal pump with channel impeller, single-stage.  
**Applications:** For handling waste water and all types of slurries, also untreated waste water, sludge, oil and thick mash as well as water mixed with solids, e.g. grains. For fluids containing abrasive and/or aggressive substances contact KSB.  
**Drive:** Standardised motor via flexible coupling.

## KVV

## Vertical centrifugal pump with channel impeller



|                           |        |
|---------------------------|--------|
| DN                        | 50-350 |
| up to Q m <sup>3</sup> /h | 1,600  |
| up to H m                 | 60     |
| up to p <sub>d</sub> bar  | 8      |
| up to T °C                | +110   |
| up to n rpm               | 2,900  |

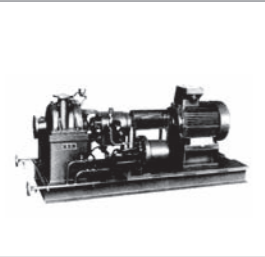
**Design:** Vertical, single-stage centrifugal pump for dry and wet installation.

**Applications:** For handling highly contaminated fluids, fluids containing sludge or solid substances, and waste water; vertical installation in pits and shafts.

**Drive:** Standardised motor via flexible coupling.

## RPKd – 50 Hz

## Process pump



|                           |               |
|---------------------------|---------------|
| DN                        | 200-26 and 40 |
| up to Q m <sup>3</sup> /h | 800           |
| up to H m                 | 265           |
| up to p <sub>d</sub> bar  | 53            |
| T °C                      | -110 to +450  |

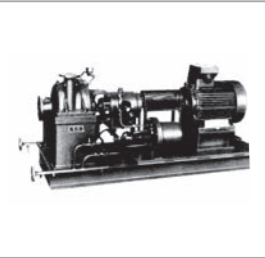
**Design:** Horizontal, double-entry, single-stage process pump with bearings on both ends, modular design system.

**Applications:** In refineries, chemical and petrochemical plants; for handling hydrocarbons.

**Drive:** Direct-drive motor via flexible coupling, on baseplate.

## RPKd – 60 Hz

## Process pump



|                           |              |
|---------------------------|--------------|
| DN                        | 200          |
| up to Q m <sup>3</sup> /h | 970          |
| up to H m                 | 365          |
| up to p <sub>d</sub> bar  | 53           |
| T °C                      | -110 to +450 |

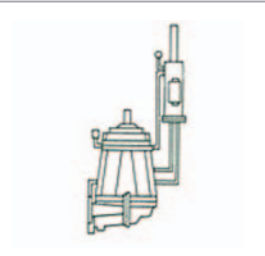
**Design:** Horizontal, double-entry, single-stage process pump with bearings on both ends, modular design system.

**Applications:** In refineries, chemical and petrochemical plants; for handling hydrocarbons.

**Drive:** Direct-drive motor via flexible coupling, on baseplate.

## RPKv – 50 Hz

## Vertical process pump



|                           |             |
|---------------------------|-------------|
| DN                        | 40-100      |
| up to Q m <sup>3</sup> /h | 220         |
| up to H m                 | 350         |
| up to p <sub>d</sub> bar  | 43          |
| T °C                      | -160 to -35 |

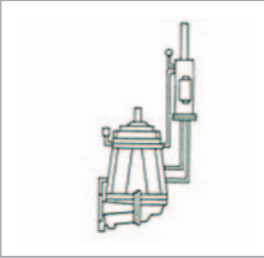
**Design:** Vertical, radially split volute casing pump in back pull-out design, single-flow, one or two stages, with radial impeller.

**Applications:** For handling liquefied gases such as methane, ethane, propane and butane; in cooling circuits, in cryogenic and petrochemical applications.

**Drive:** Direct-drive motor via flexible coupling, on baseplate.

## RPKv – 60 Hz

## Vertical process pump



|                           |             |
|---------------------------|-------------|
| DN                        | 40-100      |
| up to Q m <sup>3</sup> /h | 300         |
| up to H m                 | 520         |
| up to p <sub>d</sub> bar  | 43          |
| T °C                      | -160 to -35 |

**Design:** Vertical, radially split volute casing pump in back pull-out design, single-flow, one or two stages, with radial impeller.

**Applications:** For handling liquefied gases such as methane, ethane, propane and butane; in cooling circuits, in cryogenic and petrochemical applications.

**Drive:** Direct-drive motor via flexible coupling, on baseplate.

## SPK – 50 Hz

## Centrifugal pump with mixed flow impeller



|                           |         |
|---------------------------|---------|
| DN                        | 150-500 |
| up to Q m <sup>3</sup> /h | 3,200   |
| up to H m                 | 38      |
| up to p <sub>d</sub> bar  | 6.5     |
| up to T °C                | +200    |

**Design:** Horizontal, radially split volute casing pump with bearing pedestal, with open or closed mixed flow impeller, single-entry, single-stage.

**Applications:** For handling hot and cold fluids (e.g. cooling water), waste water, mechanically treated waste water, lime milk, white water, pulp, groundwood pulp and paper; for applications in water management and waste water treatment plants; in steam power stations and combined heat and power stations; in the sugar, pulp, paper, textile and chemical industries.

**Drive:** Direct-drive electric motor.

## SPK – 60 Hz

## Centrifugal pump with mixed flow impeller



|                           |         |
|---------------------------|---------|
| DN                        | 150-500 |
| up to Q m <sup>3</sup> /h | 3,700   |
| up to H m                 | 42      |
| up to p <sub>d</sub> bar  | 6.5     |
| up to T °C                | +200    |

**Design:** Horizontal, radially split volute casing pump with bearing pedestal, with open or closed mixed flow impeller, single-entry, single-stage.

**Applications:** For handling hot and cold fluids (e.g. cooling water), waste water, mechanically treated waste water, lime milk, white water, pulp, groundwood pulp and paper; for applications in water and waste water treatment plants; in steam power stations and combined heat and power stations; in the sugar, pulp, paper, textile and chemical industries.

**Drive:** Direct-drive electric motor.

## SPV

## Vertical centrifugal pump



|                           |         |
|---------------------------|---------|
| DN                        | 150-500 |
| up to Q m <sup>3</sup> /h | 3,200   |
| up to H m                 | 38      |
| up to p <sub>d</sub> bar  | 6.5     |
| up to T °C                | +200    |

**Design:** Vertical, single-entry, single-stage centrifugal pump, not self-priming.

**Applications:** For handling hot and cold fluids (e.g. cooling water), waste water, mechanically treated waste water, lime milk, white water, pulp, groundwood pulp and paper; for applications in water management and waste water treatment plants; in steam power stations and combined heat and power stations; in the sugar, pulp, paper, textile and chemical industries.

**Drive:** Direct-drive electric motor.

## WK/WL

## High-pressure centrifugal pump



|                           |                      |
|---------------------------|----------------------|
| DN                        | 40-250 <sup>1)</sup> |
| up to Q m <sup>3</sup> /h | 1,200                |
| up to H m                 | 770                  |
| up to p <sub>d</sub> bar  | 63                   |
| up to T °C                | +230                 |
| up to n rpm               | 3,000                |

<sup>1)</sup> Up to DN 350 on request.

**Design:** Single or multi stage, horizontal high-pressure centrifugal pump in ring-section design, vertically split suction, discharge and stage casings.

**Applications:** For pumping duties in waterworks, in general irrigation and spray irrigation systems; in boiler feed systems; for handling condensate; for high-pressure water in hydraulic power systems and presses, as fire-fighting pump sets; for circulating cooling water and hot water, etc.

**Drive:** Direct-drive electric motor via flexible coupling.

## WKA

## High-pressure pump



|                           |        |
|---------------------------|--------|
| DN                        | 40-150 |
| up to Q m <sup>3</sup> /h | 330    |
| up to H m                 | 360    |
| up to p <sub>d</sub> bar  | 40     |
| up to T °C                | +150   |
| up to n rpm               | 3,000  |

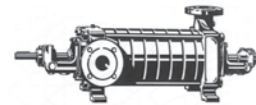
**Design:** Horizontal, radially split ring-section pump with individually balanced impellers, single-entry, multi-stage.

**Applications:** For general water supply duties; as a cooling, condensate or hot water pump in the industry; in fire-fighting systems and for transporting clean water in systems with a low NPSH value.

**Drive:** Direct-drive electric motor via flexible coupling.

## WKF

## High-pressure pump



|                           |             |
|---------------------------|-------------|
| DN                        | 40-150      |
| up to Q m <sup>3</sup> /h | 760         |
| up to H m                 | 630         |
| up to p <sub>d</sub> bar  | 63          |
| T °C                      | -10 to +200 |
| up to n rpm               | 2,900       |

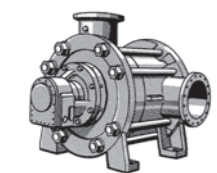
**Design:** Horizontal, single or multi stage centrifugal pump in ring-section design (vertically split), with shaft protecting sleeve / shaft sleeve, with balance drum, pump feet at suction and discharge casing.

**Applications:** For industrial and municipal water supply, spray irrigation, pressure boosting; for handling condensate; for transporting feed water for small and medium size boiler plants; for handling organic and inorganic fluids in the chemical industry; for coolants and emulsions; for use in fire-fighting and district heating systems.

**Drive:** Electric motor via flexible coupling, usually on the suction side.

## WKH/WLH

## High-pressure pump



|                           |       |
|---------------------------|-------|
| DN                        | 300   |
| up to Q m <sup>3</sup> /h | 3,600 |
| up to H m                 | 500   |
| up to p <sub>d</sub> bar  | 64    |
| up to T °C                | +180  |
| up to n rpm               | 1,760 |

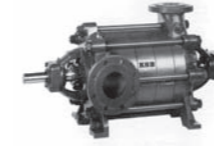
**Design:** Horizontal, multi-stage centrifugal pump in ring-section design, either with balance drum (WKH) or, on request, with balance disc (WLH), pump feet centreline or below.

**Applications:** For handling clean, raw, service, pit, process and hot water as well as condensate and other pure or slightly contaminated neutral to slightly aggressive fluids in industrial and municipal water supply, power stations, the chemical industry, mining, district heating, pressure boosting, spray irrigation and fire-fighting systems.

**Drive:** On request / as required.

## WKL/WKLn

## High-pressure centrifugal pump



|                           |        |
|---------------------------|--------|
| DN                        | 32-150 |
| up to Q m <sup>3</sup> /h | 470    |
| up to H m                 | 250    |
| up to p <sub>d</sub> bar  | 28     |
| up to T °C                | +140   |
| up to n rpm               | 2,900  |

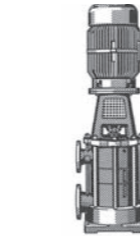
**Design:** Horizontal, single and multi stage high-pressure centrifugal pump in ring-section design.

**Applications:** For general water supply duties in waterworks, in pressure boosting, spray irrigation and general irrigation systems; for boiler feed systems, for transporting condensate; for circulating cooling water and hot water; for high-pressure water in hydraulic power systems and presses; for use as a fire-fighting pump; for clean fluids without abrasive or solid substances.

**Drive:** On request / as required.

## WKL/WKLv

## High-pressure centrifugal pump



|                           |         |
|---------------------------|---------|
| DN                        | 80-150  |
| up to Q m <sup>3</sup> /h | 500     |
| up to H m                 | 400/223 |
| up to p <sub>d</sub> bar  | 40/25   |
| up to T °C                | +110    |

**Design:** Single or multi stage centrifugal pump in ring-section design, with shaft protecting sleeve.

**Applications:** For general water supply duties, in spray irrigation, general irrigation and pressure boosting systems; for circulating hot water, superheated water and cooling water; for handling condensate; for boiler feed applications; for use as fire-fighting pumps.

**Drive:** On request / as required.

## WKLv/WKLvn

## Vertical high-pressure centrifugal pump



|                           |             |
|---------------------------|-------------|
| DN                        | 32-100      |
| up to Q m <sup>3</sup> /h | 180         |
| up to H m                 | 260         |
| up to p <sub>d</sub> bar  | 26          |
| T °C                      | -10 to +140 |
| up to n rpm               | 2,900       |

**Design:** Horizontal centrifugal pump in ring-section design (vertically split suction, discharge and stage casings), drive and pump on a common baseplate, single or multi stage. Casing parts and bearing bracket lantern held together by external tie bolts.

**Applications:** For general water supply duties in waterworks, in pressure boosting, spray irrigation and general irrigation systems; for boiler feed systems; for transporting condensate; for circulating cooling water and hot water.

**Drive:** Electric motor via flexible coupling. Motor connected via a thrust bracket lantern and flexible coupling.



### How to find us



**KSB Service GmbH**  
Freudenbergstraße 35 · 44809 Bochum (Germany)  
Tel. +49 234 52902-5118 · Fax +49 234 52902-5188  
E-mail: ksb-service@ksb.com · www.ksb.com